

A.S.P. Electro-Technology Ltd

Tel: +44 (0) 1455 635796
Fax: +44 (0) 1455 610851

sales@asp-electro-tech.com
www.asp-electro-tech.com

GNExCP7-PB Dual Action Push Button Manual Call Point

The GNExCP7-PB dual action push button Ex d explosion proof manual call points feature a robust GRP (glass reinforced polyester) enclosure with a 316 stainless steel mechanism and IP66/67 rating – designed for the harshest hazardous environments.

Requiring a twist and push action to activate the GNExCP7-PB features a robust stainless steel button. Certified to IECEx and ATEX standards for all Zone 1, 2, 21 and 22 installations. Available with standard DIN rail terminals or the innovative E2S termination board providing dedicated connections for field installed EOL and/or series devices. SIL 2 compliant to IEC 61508 (2010).

Features

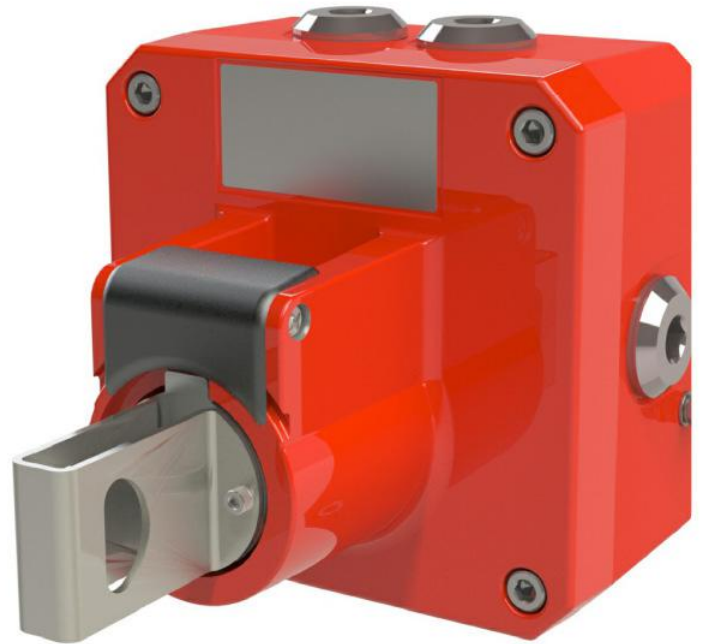
- Robust corrosion proof GRP enclosure
- Anti-static & UV stable
- Ingress protection IP66/67
- Single or double switch
- 316 (A4) Stainless Steel mechanism
- Latching lift flap
- 2 x Stopping plugs included
- 3 x M20 cable entries
- Captive stainless steel fasteners
- SIL 2 compliant to IEC 61508

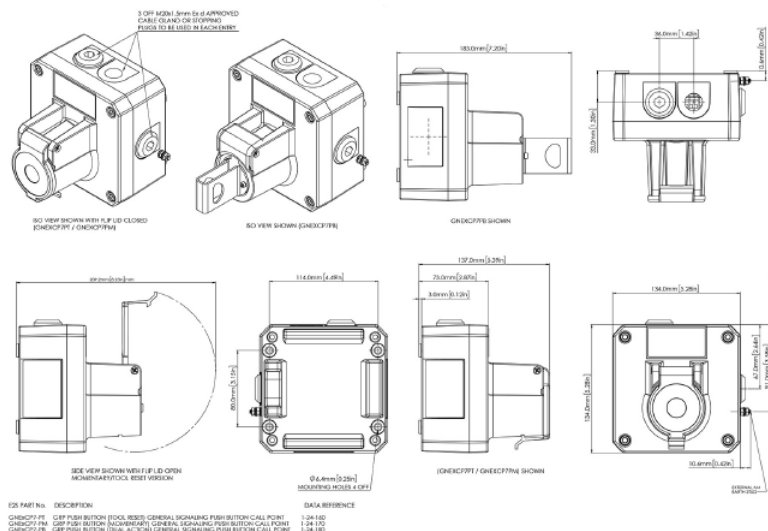
Approvals

- IECEx certificate: IECEx ULD 19.0007X
- ATEX certificate: DEMKO 19 ATEX 2101X
- SIL 2 compliant to IEC 61508 (2010)

Coding

- IECEx & ATEX:
 - II 2G Ex db IIC T5 Gb Ta. -55 to +70°C
 - II 2G Ex db IIC T6 Gb Ta. -55 to +60°C
 - II 2D Ex tb IIIC T90°C Db Ta. -55° to +70°C





Specification

Version:	GNEXP7-PB
Temp. Range:	-55°C to +70°C
Ingress protection:	EN/IEC 60529 - IP66/67
Enclosure matl:	GRP Glass Reinforced Polyester
Colour:	RAL3000 Red Other solid and striped colours available
Cable entries:	2 x top and 1 x side. Back box can be rotated to give 2 x bottom and 1 x side entries
Stopping plugs:	2 x Stopping plugs as standard Brass, Nickel plated or Stainless Steel
Terminals:	DIN rail 8 x 2.5mm ² SAK2.5 or Termination board featuring 6 x 2.5mm ² terminals plus 4 x dedicated EOL & Series terminals
Earth:	External M5 earth connection
Weight:	2.1Kg/4.63lbs
Voltage Range/Current:	250Vac Max 3.33A max 48Vdc Max 1.00A max 24Vdc Max 3.00A max
Accessories:	
SP65-0001-A2	Pole Mount Bracket Kit 2" St/St A2 (304)
SP65-0001-A4	Pole Mount Bracket Kit 2" St/St A4 (316)
SP65-0002-A2	Sunshade - St/St A2 (304)
SP65-0002-A4	Sunshade - St/St A4 (316)

Part Codes

Version:	Part references:	Description:
Product type:	GNEXP7-PB	Dual action push button
Switch Type: [s]	S D	SPCO/SPDT DPCO/DPDT
Cable Entry Type: [e]	A B C D E F G H I J	3 x M20x1.5mm 2 x 1/2" NPT - adaptors 2 x 3/4" NPT - adaptors 2 x M25x1.5mm - adaptors 1 x 1/2" NPT - adaptor 1 x 3/4" NPT - adaptor 1 x M25x1.5mm - adaptor 3 x 1/2" NPT - adaptors 3 x 3/4" NPT - adaptors 3 x M25x1.5mm - adaptors
Stopping plug material: [m]	B P S	Brass Nickel Plated Brass Stainless Steel
Terminals: [t]	D P	DIN Rail 8 x SAK2.5 Termination board: 6 x 2.5mm ² terminals plus 4 : EOL & Series terminals
Lift flap: [l]	N	Lift flap not available
Duty label / Equipment tag: [d]:	1 2 3 4 5 6	No Duty label, no Equip. tag Duty label Stainless Steel Duty label St/St + Equip. tag Duty label Metalised Polyester Duty label M. Poly. + Equip. tag Equip. tag only
Version: [v]	A1	IECEX & ATEX approved
Enclosure colour: [x]	R, B, N, Y, V, S, K	Red, Blue, Green, Yellow Red/White, Yellow/Black, Black
E.O.L. Module: [Exxx] optional	ExxxR ED1 ExxxZ	Resistor value in Ohms e.g. E470R = 470Ω Diode IN4007 = ED1 Zener diode e.g. E5V1Z = 5.1V
Series Module: [Sxxx] optional	SxxxR SD1 SxxxZ	Resistor value in Ohms e.g. S1K5R = 1.5KΩ Diode IN4007 = SD1 Zener diode e.g. S5V1Z = 5.1V